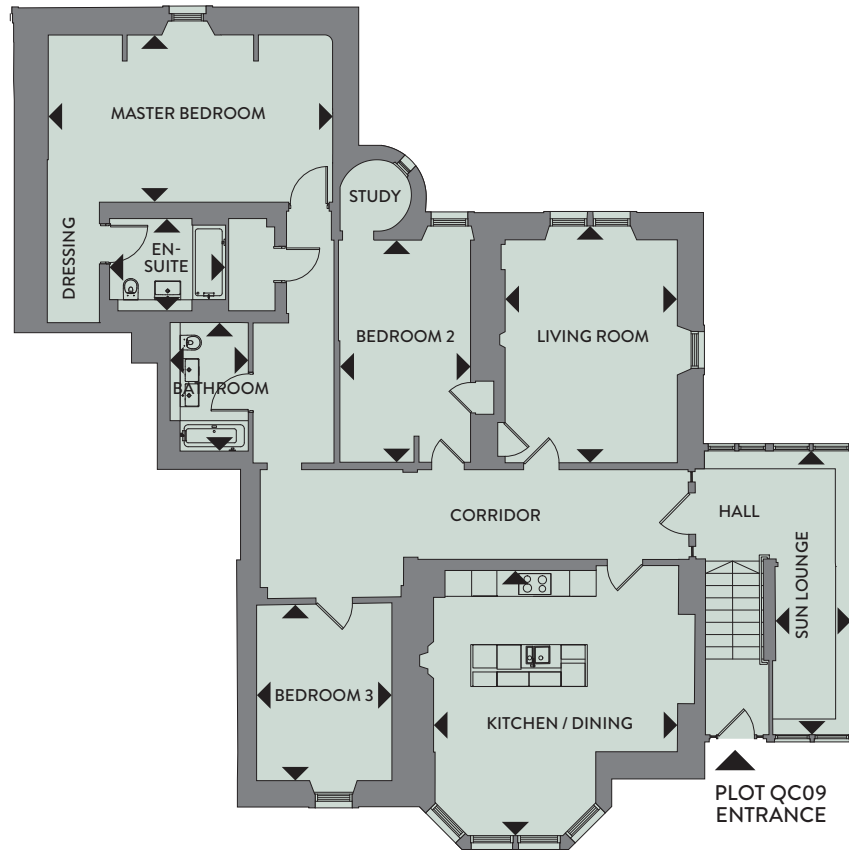


QUEEN'S CRAIG

PLOT QC09

Ground Floor Apartment



PLOT QC09 • 3 BEDROOM

| | | |
|------------------|-----------------|--------------------|
| Sun lounge | 1.820m x 7.030m | 6ft 0" x 23ft 1" |
| Kitchen / Dining | 6.050m x 6.525m | 19ft 10" x 21ft 5" |
| Master bedroom | 7.040m x 4.125m | 23ft 1" x 13ft 6" |
| En-suite | 2.800m x 2.125m | 9ft 2" x 7ft 0" |
| Bedroom 3 | 3.175m x 4.375m | 10ft 5" x 14ft 4" |
| Living room | 4.200m x 5.860m | 13ft 9" x 19ft 3" |
| Bedroom 2 | 3.200m x 5.475m | 10ft 6" x 18ft 0" |
| Bathroom | 1.900m x 3.000m | 6ft 3" x 9ft 10" |