



LIFESTYLE
LUXURY
LOCATION

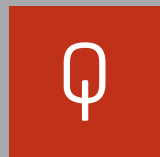
MEADOW HEIGHTS





LIFESTYLE. LUXURY. LOCATION. MEADOW HEIGHTS HAS IT ALL.

All the attractions of Scotland's capital on your doorstep. All the history, culture and entertainment. All the shops and restaurants. All the bustle of the city. All the leafy tranquility of the Meadows. All you could want from a home or an investment. All finished to the highest specification. All master-planned by award-winning architects Foster + Partners. All this. All you could ever dream of. All at Quatermile.





LIFESTYLE



QUARTERMILE
IS MORE THAN
A PLACE TO LIVE;
IT'S A WAY TO LIVE



With its cosmopolitan mix of apartments, cafes, shops, restaurants, hotel, beauty salon, 24 hour gym and more, Quatermile is unique within Edinburgh.

Meadow Heights is the latest phase to be released at Quatermile. It offers 1, 2 and 4 bedroom apartments with floor-to-ceiling windows framing unequalled views of the city and the Meadows.

Topped by a spectacular 4 bedroom penthouse with private roof terrace, this is the height of stylish, luxury living.





LUXURY

SPECTACULAR
LIGHT-FILLED
INTERIORS
DESIGNED BY
FOSTER + PARTNERS



Within each state-of-the-art apartment, you'll find stunning attention to detail.

Bespoke Foster + Partners kitchens and bathrooms. Oak flooring. Feature lighting. Luxurious touches, all finished to the highest specification.

Residents also enjoy the luxury of our 24 hour concierge service. Underground parking (available by separate negotiation) is accessed directly from the building. And for a back garden, the vast expanse of the Meadows.



LOCATION



ON THE EDGE OF
THE MEADOWS,
YET IN THE HEART
OF THE CITY



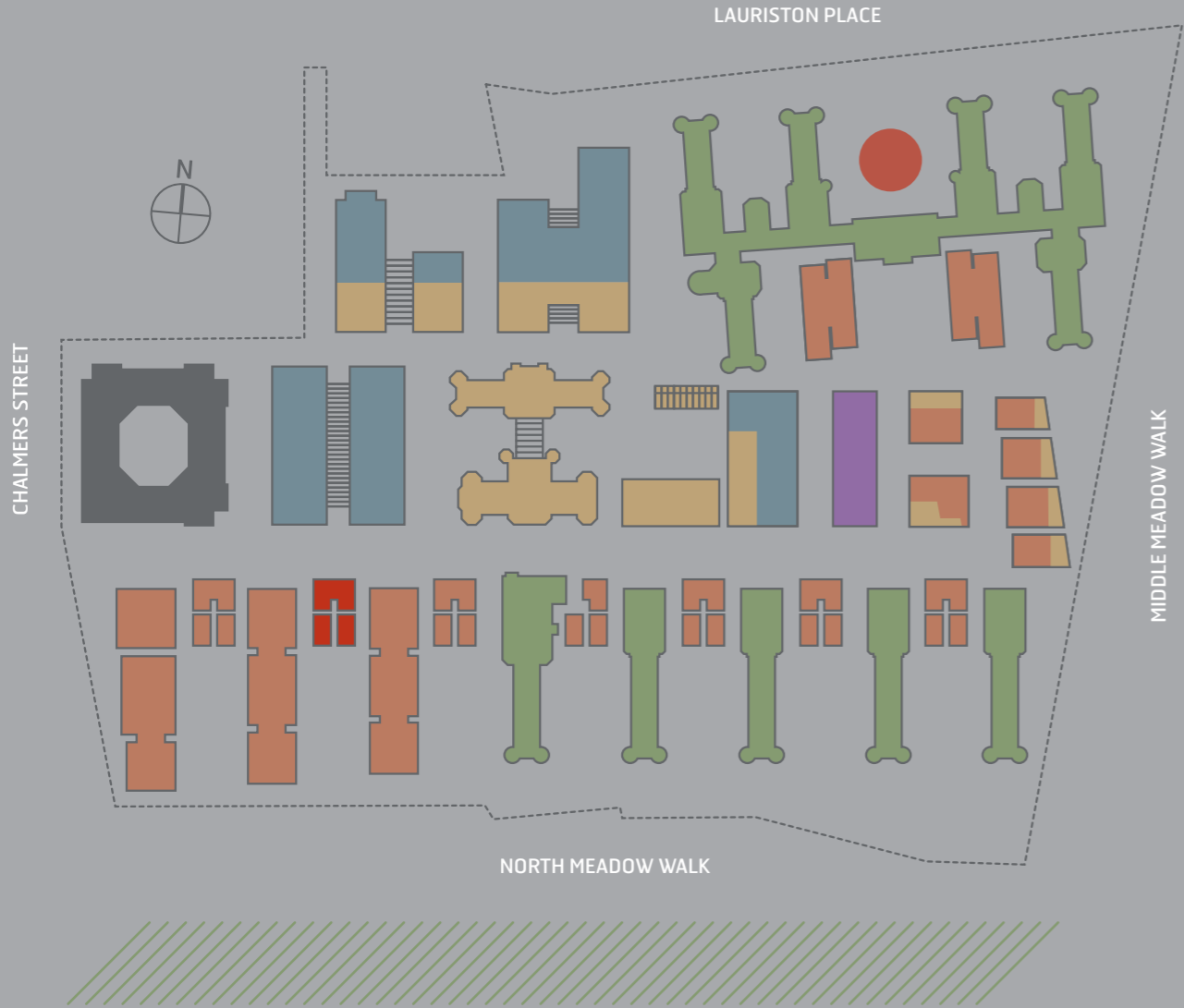


Quatermile nestles in the historic city centre, surrounded on all sides by the best Edinburgh has to offer.

Shops, museums, theatres, restaurants, Edinburgh University and glorious wide open spaces are all within walking distance.

This is a new landmark in Edinburgh. The city's most exciting new address.





LUXURIOUS LIFESTYLE
 SPECTACULAR VIEWS
 UNBEATABLE LOCATION
 MEADOW HEIGHTS HAS IT ALL

- Meadow Heights
- Office Space
- New Build Apartments
- Conversion Apartments
- Retail, Leisure and Hotels
- Marriott Residence Inn
- Affordable
- The Meadows
- Quatermile Marketing Centre

ARRANGE A VIEWING TODAY
 0845 000 2525
 QMILE.COM
 SALES@QMILE.COM
 Marketing Centre
 1 Lauriston Place · EH3 9AU
 Open 7 days

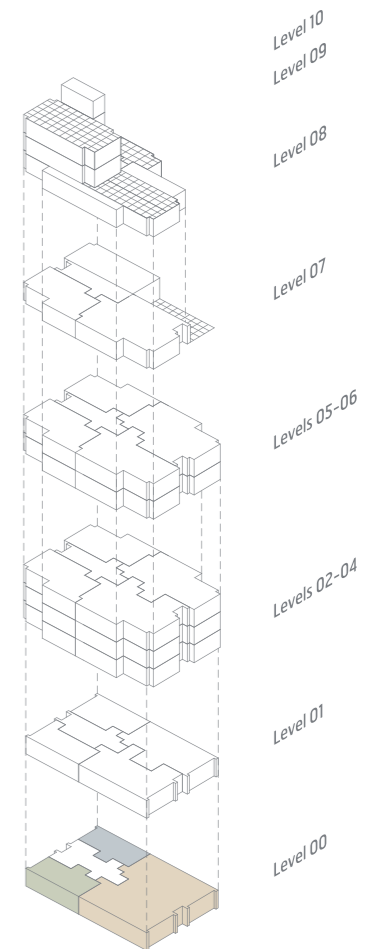


LEVEL 00

MEADOW HEIGHTS

Plot 497 (414 sqft)		
Lounge/Kitchen	4.685m x 3.660m	15ft 4" x 12ft 0"
Bedroom	3.327m x 2.900m	10ft 11" x 9ft 6"
Shower Room	2.690m x 1.500m	8ft 10" x 4ft 11"
Plot 498 (1839 sqft)		
Lounge/Dining	13.700m x 3.985m	44ft 11" x 13ft 1"
Kitchen	5.670m x 3.400m	18ft 7" x 11ft 2"
Bedroom 1	5.600m x 4.150m	18ft 4" x 13ft 7"
En-suite (1)	2.440m x 1.500m	8ft 0" x 4ft 11"
Bedroom 2	5.600m x 4.165m	18ft 4" x 13ft 8"
En-suite	2.440m x 2.000m	8ft 0" x 6ft 7"
Bedroom 3	4.320m x 2.625m	14ft 2" x 8ft 7"
Bedroom 4	4.300m x 2.625m	14ft 1" x 8ft 7"
Bathroom	2.565m x 1.700m	8ft 5" x 5ft 7"
Plot 499 (437 sqft)		
Lounge/Kitchen	4.685m x 3.660m	15ft 4" x 12ft 0"
Bedroom	3.327m x 2.900m	10ft 11" x 9ft 6"
Shower Room	2.690m x 1.500m	8ft 10" x 4ft 11"

All plans in this brochure are not drawn to scale and are for illustrative purposes only. Consequently they do not form part of any contract. All kitchen, bathroom and en-suite layouts are provisional and may be subject to alteration.



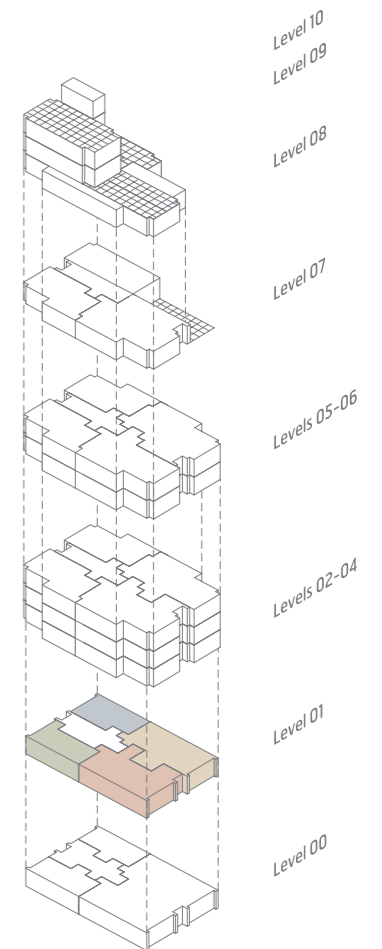


LEVEL 01

MEADOW HEIGHTS

Plot 500 (507 sqft)		
Lounge/Kitchen	5.200m x 4.795m	17ft 1" x 15ft 9"
Bedroom	4.638m x 2.880m	15ft 3" x 9ft 5"
Shower Room	2.440m x 1.500m	8ft 0" x 4ft 11"
Plot 501 (907 sqft)		
Lounge/Kitchen	6.585m x 5.200m	21ft 7" x 17ft 1"
Bedroom 1	4.300m x 2.635m	14ft 1" x 8ft 8"
Bedroom 2	4.300m x 2.825m	14ft 1" x 9ft 3"
Bathroom	2.700m x 2.515m	8ft 10" x 8ft 3"
Plot 502 (869 sqft)		
Lounge/Kitchen	8.100m x 5.185m	26ft 7" x 17ft 0"
Bedroom 1	4.300m x 2.625m	14ft 1" x 8ft 7"
Bedroom 2	4.300m x 2.800m	14ft 1" x 9ft 2"
En-suite (2)	2.440m x 1.500m	8ft 0" x 4ft 11"
Bathroom	2.710m x 2.000m	8ft 11" x 6ft 7"
Plot 503 (423 sqft)		
Lounge/Kitchen	5.200m x 4.535m	17ft 1" x 14ft 10"
Bedroom	3.475m x 2.900m	11ft 5" x 9ft 6"
Bathroom	2.700m x 1.500m	8ft 10" x 4ft 11"

All plans in this brochure are not drawn to scale and are for illustrative purposes only. Consequently they do not form part of any contract. All kitchen, bathroom and en-suite layouts are provisional and may be subject to alteration.

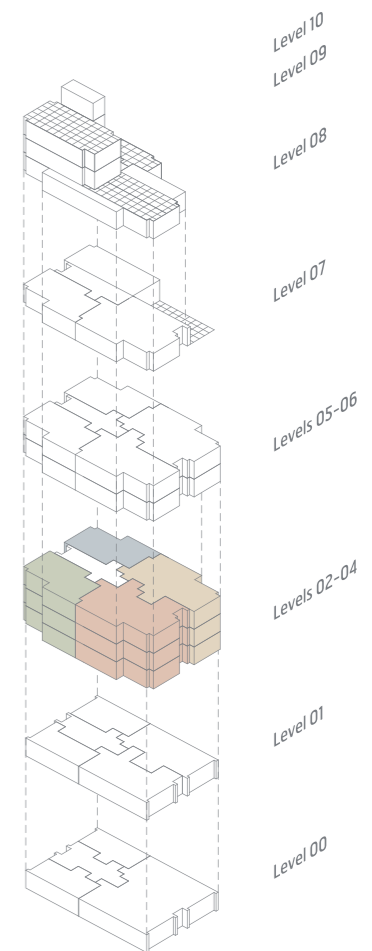
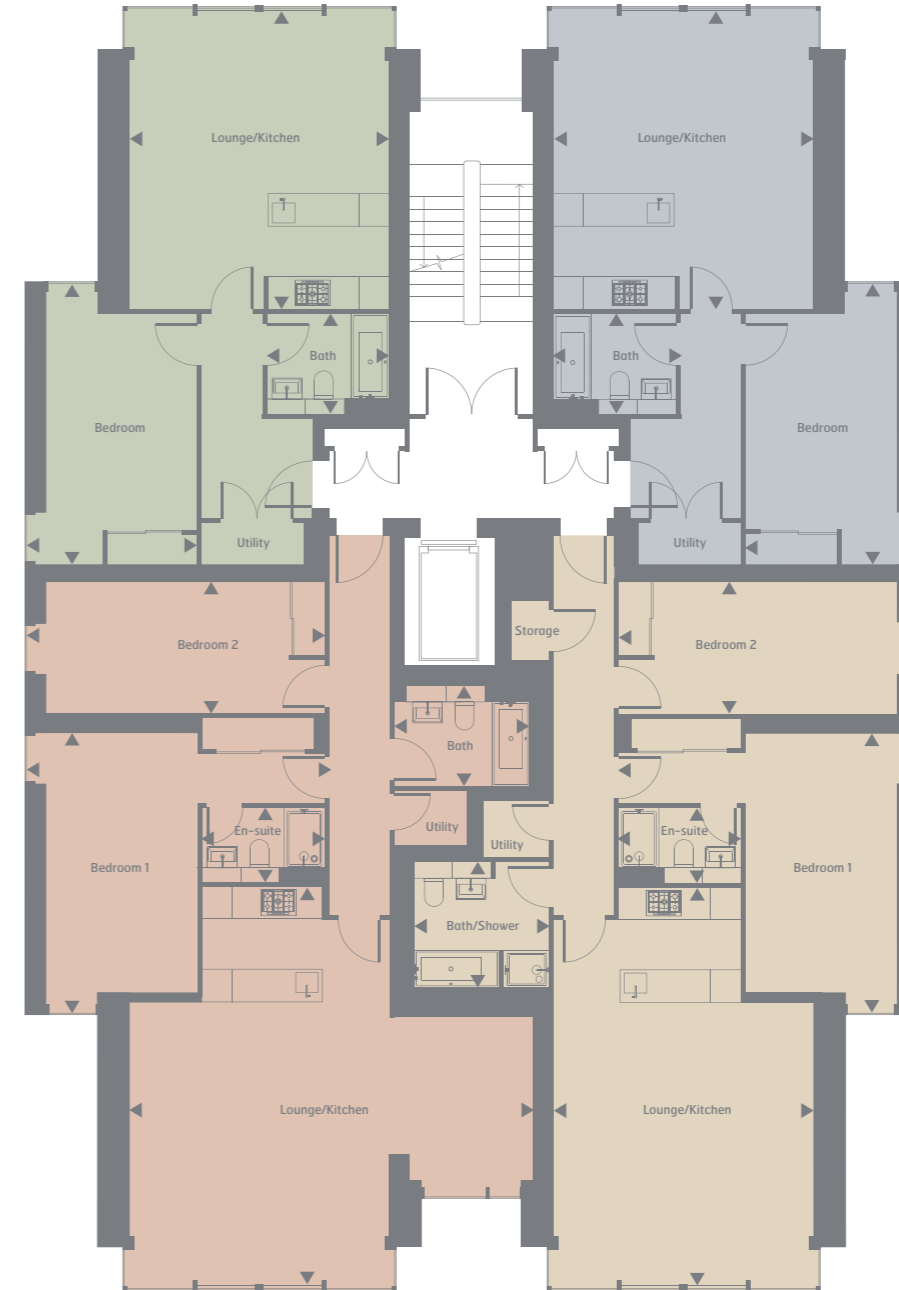




LEVEL 02
LEVEL 03
LEVEL 04
MEADOW HEIGHTS

Plot 504 • 508 • 512 (657 sqft)		
Lounge/Kitchen	5.855m x 5.200m	19ft 2" x 17ft 1"
Bedroom	5.465m x 3.220m	17ft 11" x 10ft 7"
Bathroom	2.440m x 2.000m	8ft 0" x 6ft 7"
Plot 505 • 509 • 513 (1056 sqft)		
Lounge/Kitchen	7.855m x 5.200m	25ft 9" x 17ft 1"
Bedroom 1	5.770m x 5.715m	18ft 11" x 18ft 9"
Bedroom 2	5.770m x 2.650m	18ft 11" x 8ft 8"
En-suite	2.440m x 1.500m	8ft 0" x 4ft 11"
Bathroom	2.515m x 2.700m	8ft 3" x 8ft 10"
Plot 506 • 510 • 514 (1129 sqft)		
Lounge/Kitchen	8.100m x 7.855m	26ft 7" x 25ft 9"
Bedroom 1	5.770m x 5.740m	18ft 11" x 18ft 10"
Bedroom 2	5.770m x 2.625m	18ft 11" x 8ft 7"
En-suite	2.440m x 1.500m	8ft 0" x 4ft 11"
Bathroom	2.710m x 2.000m	8ft 11" x 6ft 7"
Plot 507 • 511 • 515 (658 sqft)		
Lounge/Kitchen	5.855m x 5.200m	19ft 2" x 17ft 1"
Bedroom	5.465m x 3.220m	17ft 11" x 10ft 7"
Bathroom	2.440m x 2.000m	8ft 0" x 6ft 7"

All plans in this brochure are not drawn to scale and are for illustrative purposes only. Consequently they do not form part of any contract. All kitchen, bathroom and en-suite layouts are provisional and may be subject to alteration.



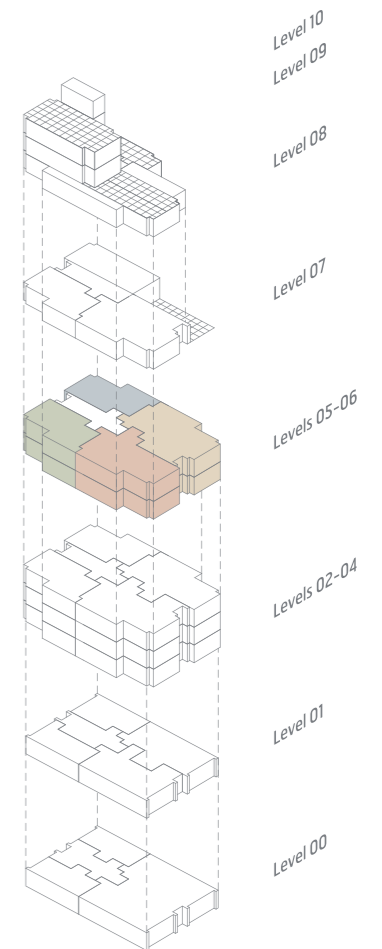


LEVEL 05 LEVEL 06

MEADOW HEIGHTS

Plot 516 • 520 (659 sqft)		
Lounge/Kitchen	5.855m x 5.200m	19ft 2" x 17ft 1"
Bedroom	5.465m x 3.220m	17ft 11" x 10ft 7"
Bathroom	2.440m x 2.000m	8ft 0" x 6ft 7"
Plot 517 • 521 (1181 sqft)		
Lounge/Kitchen	8.100m x 7.855m	26ft 7" x 25ft 9"
Bedroom 1	5.575m x 5.440m	18ft 3" x 17ft 10"
Bedroom 2	5.770m x 2.650m	18ft 11" x 8ft 8"
En-suite	2.440m x 2.000m	8ft 0" x 6ft 7"
Bathroom	2.760m x 2.700m	9ft 1" x 8ft 10"
Plot 518 • 522 (1034 sqft)		
Lounge/Kitchen	7.795m x 5.200m	25ft 7" x 17ft 1"
Bedroom 1	5.575m x 5.440m	18ft 3" x 17ft 10"
Bedroom 2	5.770m x 2.625m	18ft 11" x 8ft 7"
En-suite	2.440m x 1.500m	8ft 0" x 4ft 11"
Bathroom	2.860m x 2.000m	9ft 5" x 6ft 7"
Plot 519 • 523 (660 sqft)		
Lounge/Kitchen	5.855m x 5.200m	19ft 2" x 17ft 1"
Bedroom	5.465m x 3.220m	17ft 11" x 10ft 7"
Bathroom	2.440m x 2.000m	8ft 0" x 6ft 7"

All plans in this brochure are not drawn to scale and are for illustrative purposes only. Consequently they do not form part of any contract. All kitchen, bathroom and en-suite layouts are provisional and may be subject to alteration.



Level 10
Level 09
Level 08
Level 07
Levels 05-06
Levels 02-04
Level 01
Level 00

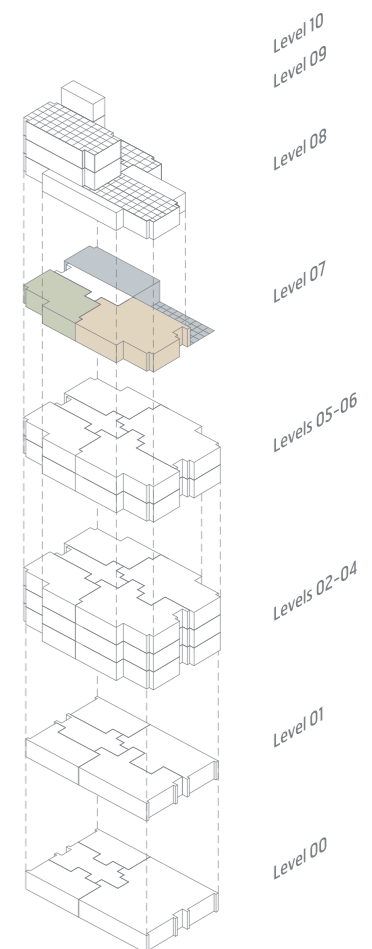


LEVEL 07

MEADOW HEIGHTS

Plot 524 (first floor) (1507 sqft)		
Lounge/Kitchen	13.285m x 5.200m	43ft 7" x 17ft 1"
Terrace	9.780m x 5.140m	32ft 1" x 16ft 10"
Plot 525 (1232 sqft)		
Lounge/Kitchen	8.055m x 7.825m	26ft 5" x 25ft 8"
Bedroom 1	5.575m x 5.440m	18ft 3" x 17ft 10"
Bedroom 2	5.770m x 2.625m	18ft 11" x 8ft 7"
En-suite	2.440m x 2.000m	8ft 0" x 6ft 7"
Bathroom	2.700m x 2.510m	8ft 10" x 8ft 3"
Plot 526 (660 sqft)		
Lounge/Kitchen	5.855m x 5.200m	19ft 2" x 17ft 1"
Bedroom	5.465m x 3.220m	17ft 11" x 10ft 7"
Bathroom	2.440m x 2.000m	8ft 0" x 6ft 7"

All plans in this brochure are not drawn to scale and are for illustrative purposes only. Consequently they do not form part of any contract. All kitchen, bathroom and en-suite layouts are provisional and may be subject to alteration.



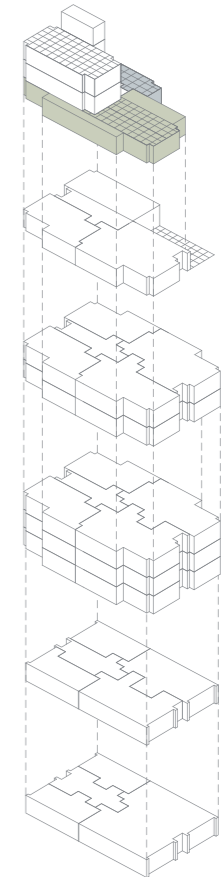


LEVEL 08

MEADOW HEIGHTS

Plot 527 (first floor) (3265 sqft)		
Bedroom 1	7.155m x 5.200m	23ft 6" x 17ft 1"
En-suite (1)	5.505m x 2.525m	18ft 1" x 8ft 3"
Bedroom 2	5.225m x 4.310m	17ft 2" x 14ft 2"
En-suite (2)	3.365m x 1.500m	11ft 0" x 4ft 11"
Bedroom 3	5.465m x 3.295m	17ft 11" x 10ft 10"
En-suite (3)	2.440m x 2.015m	8ft 10" x 6ft 7"
Bedroom 4	5.440m x 3.345m	17ft 10" x 10ft 12"
Bathroom	3.990m x 2.115m	13ft 1" x 6ft 11"
Plot 524 (second floor)		
Bedroom 1	5.200m x 4.490m	17ft 1" x 14ft 9"
En-suite	2.950m x 2.650m	9ft 8" x 8ft 8"
Bedroom 2	5.200m x 3.485m	17ft 1" x 11ft 5"
Bathroom	2.785m x 2.440m	9ft 2" x 8ft 0"

All plans in this brochure are not drawn to scale and are for illustrative purposes only. Consequently they do not form part of any contract. All kitchen, bathroom and en-suite layouts are provisional and may be subject to alteration.

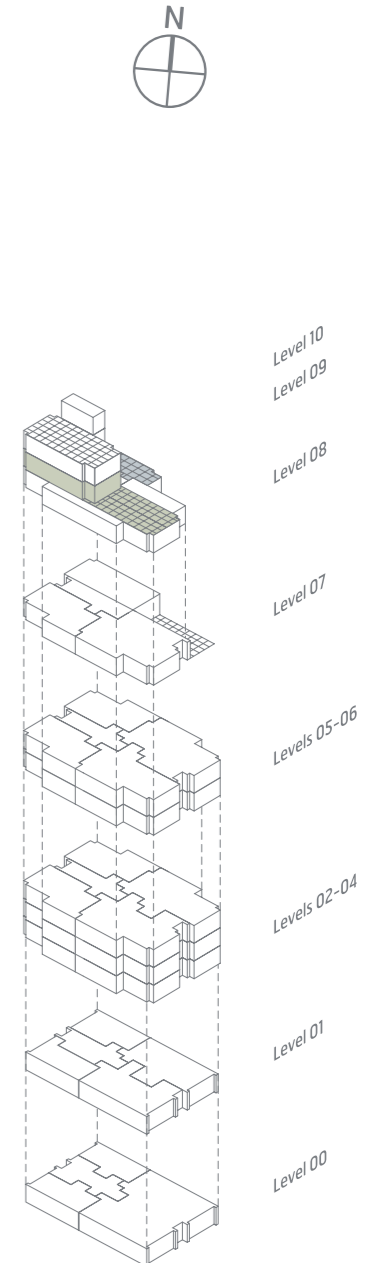
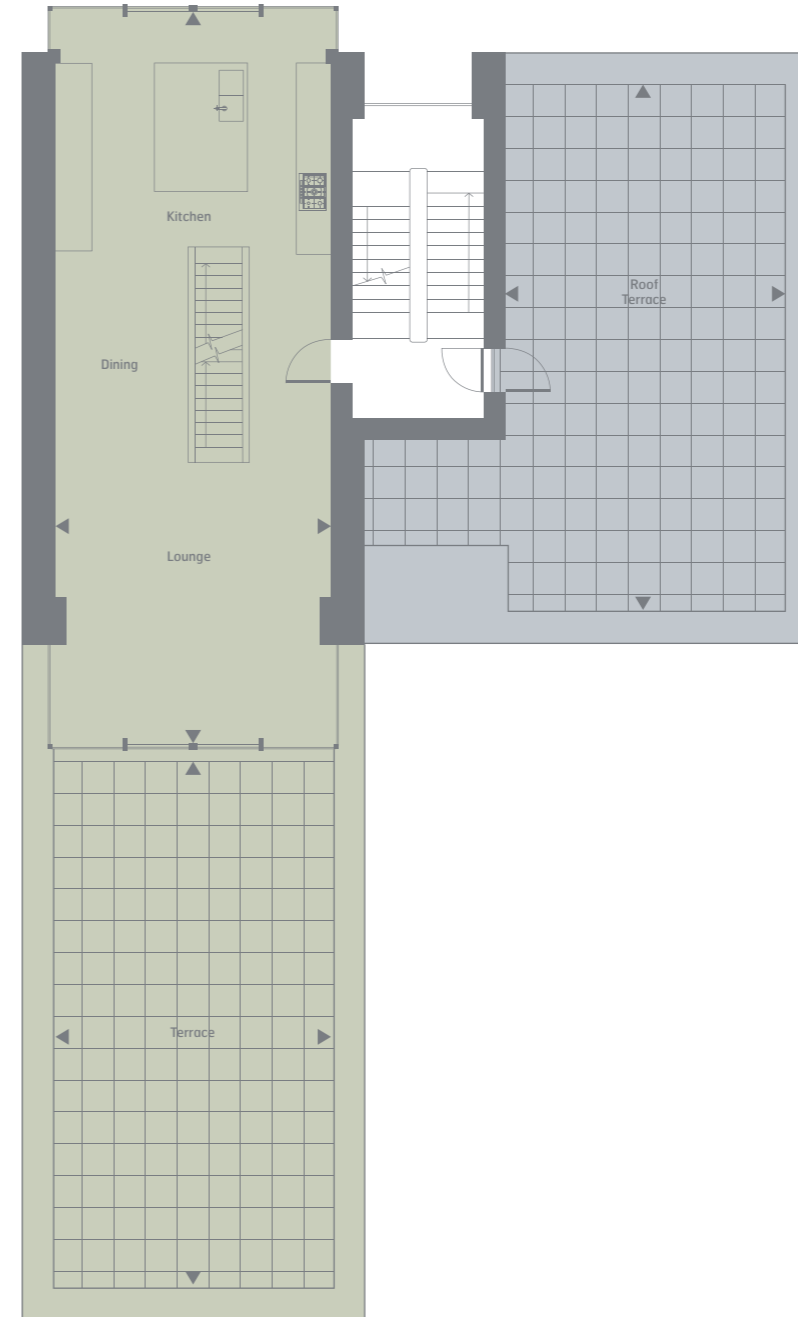


Level 10
Level 09
Level 08
Level 07
Levels 05-06
Levels 02-04
Level 01
Level 00



LEVEL 09

MEADOW HEIGHTS



Plot 527 (second floor)		
Lounge/Kitchen	13.285m x 5.200m	43ft 7" x 17ft 1"
Terrace	10.140m x 5.080m	33ft 3" x 16ft 8"
Plot 524 (roof terrace)		
Roof Terrace	9.780m x 5.140m	32ft 1" x 16ft 10"

All plans in this brochure are not drawn to scale and are for illustrative purposes only. Consequently they do not form part of any contract. All kitchen, bathroom and en-suite layouts are provisional and may be subject to alteration.

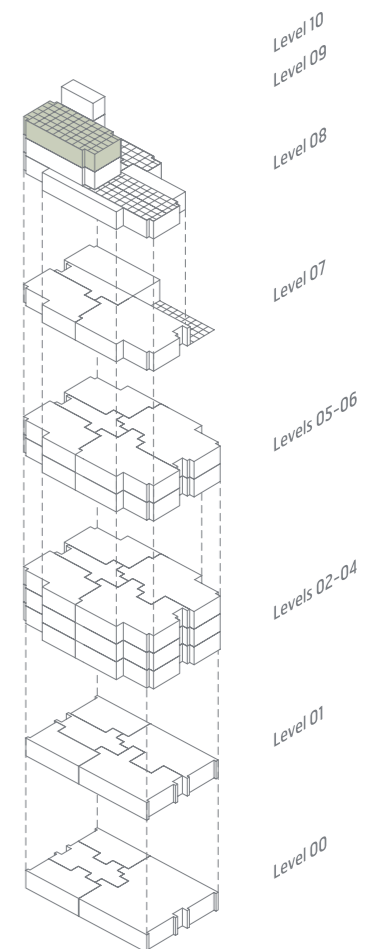
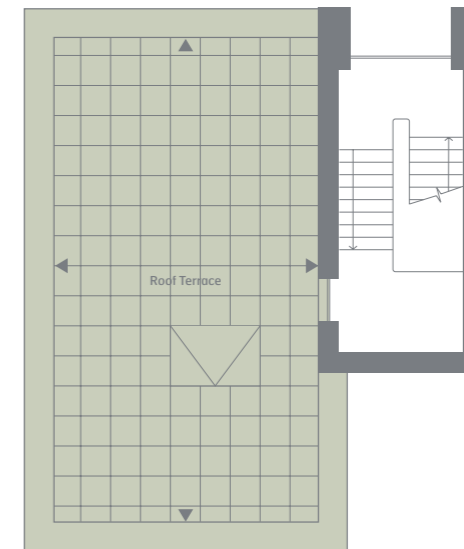
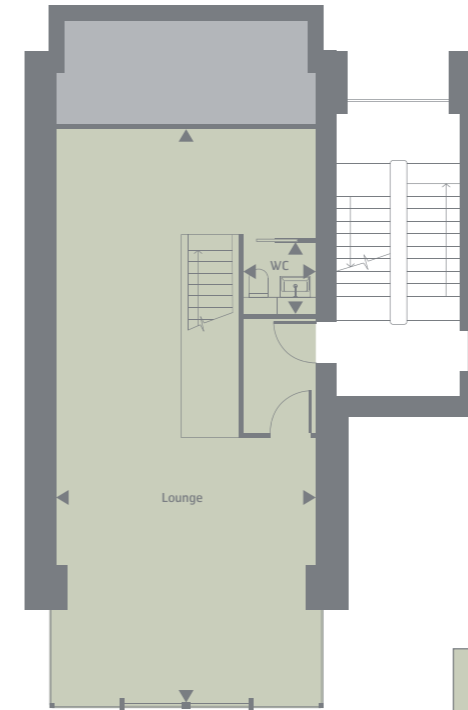


LEVEL 10

MEADOW HEIGHTS

Plot 527 (third floor and roof terrace)		
Lounge	11.100m x 5.200m	36ft 5" x 17ft 1"
WC	1.540m x 1.420m	5ft 1" x 4ft 8"
Roof Terrace	9.780m x 5.140m	32ft 1" x 16ft 10"

All plans in this brochure are not drawn to scale and are for illustrative purposes only. Consequently they do not form part of any contract. All kitchen, bathroom and en-suite layouts are provisional and may be subject to alteration.



- Level 10
- Level 09
- Level 08
- Level 07
- Levels 05-06
- Levels 02-04
- Level 01
- Level 00

QUARTERMILE MARKETING SUITE

1 Lauriston Place
Edinburgh EH3 9AU
Tel: +44 (0)845 000 2525
www.qmile.com
sales@qmile.com

MEADOW HEIGHTS SPECIFICATION

PARKING

- Allocated by separate negotiation

COMMUNAL AREAS

- Video entry system to all apartments
- All apartments are serviced by a lift
- Porcelain tiles to entrance areas
- Carpets to lift lobbies and corridors

KITCHENS

- Bespoke kitchen designed by Foster + Partners
- Integrated Siemens dishwasher
- Integrated Siemens fridge freezer
- Integrated Siemens microwave*
- Siemens stainless steel oven
- Siemens induction hob
- Stainless steel sink with chrome monoblock mixer tap
- Integrated compartmental recycling bins
- Utility room has a freestanding washer drier

BATHROOMS AND EN-SUITES

- Bespoke bathrooms designed by Foster + Partners
- White wall hung WCs and basins from the Villeroy and Boch range
- White Villeroy and Boch bath with glass bath screen and shower above*
- Hans Grohe mixer taps to bath and basin
- Low profile shower tray with glass enclosure*
- Porcelain wall and floor tiles
- Tiled skirtings matching floor tiles
- Shaver socket
- Vanity units above basins with mirrors

LIGHTING

- LED recessed downlighters to kitchens, bathrooms, living rooms, bedrooms and hallways
- Feature lighting to bathroom and kitchen cabinets

HEATING

- Communal gas fired central heating
- Wall mounted radiators
- Polished chrome electric heated towel rail to all bathrooms
- Underfloor electric trace heating to all bathrooms

ELECTRICAL

- TV, radio and telephone points to all principal rooms
- Structured cabling platform enabling allocation of telephone points throughout the home; network computers, printers and internet access and satellite, cable or terrestrial TV throughout the main living areas
- Smoke detectors to hall and heat detector to kitchen/living area

FLOORING

- Oak flooring to living room, kitchen and hallways
- Porcelain floor tiles to all bathrooms
- Linoleum to utility rooms

GENERAL

- Internal doors are flush solid core white
- Ironmongery is satin stainless steel
- Walls are painted in a white emulsion
- Skirtings and architraves are also white
- Floor to ceiling windows in living areas which are double glazed with tilt and slide double glazed doors
- Fitted wardrobes with shelving

* Depending on apartment layout.

GRAPHICS AND IMAGES

The computer generated graphics have been prepared for illustrative purposes and are indicative only. They do not form part of any contract, or constitute a representation or warranty. External appearance may be subject to variation upon completion of project.

