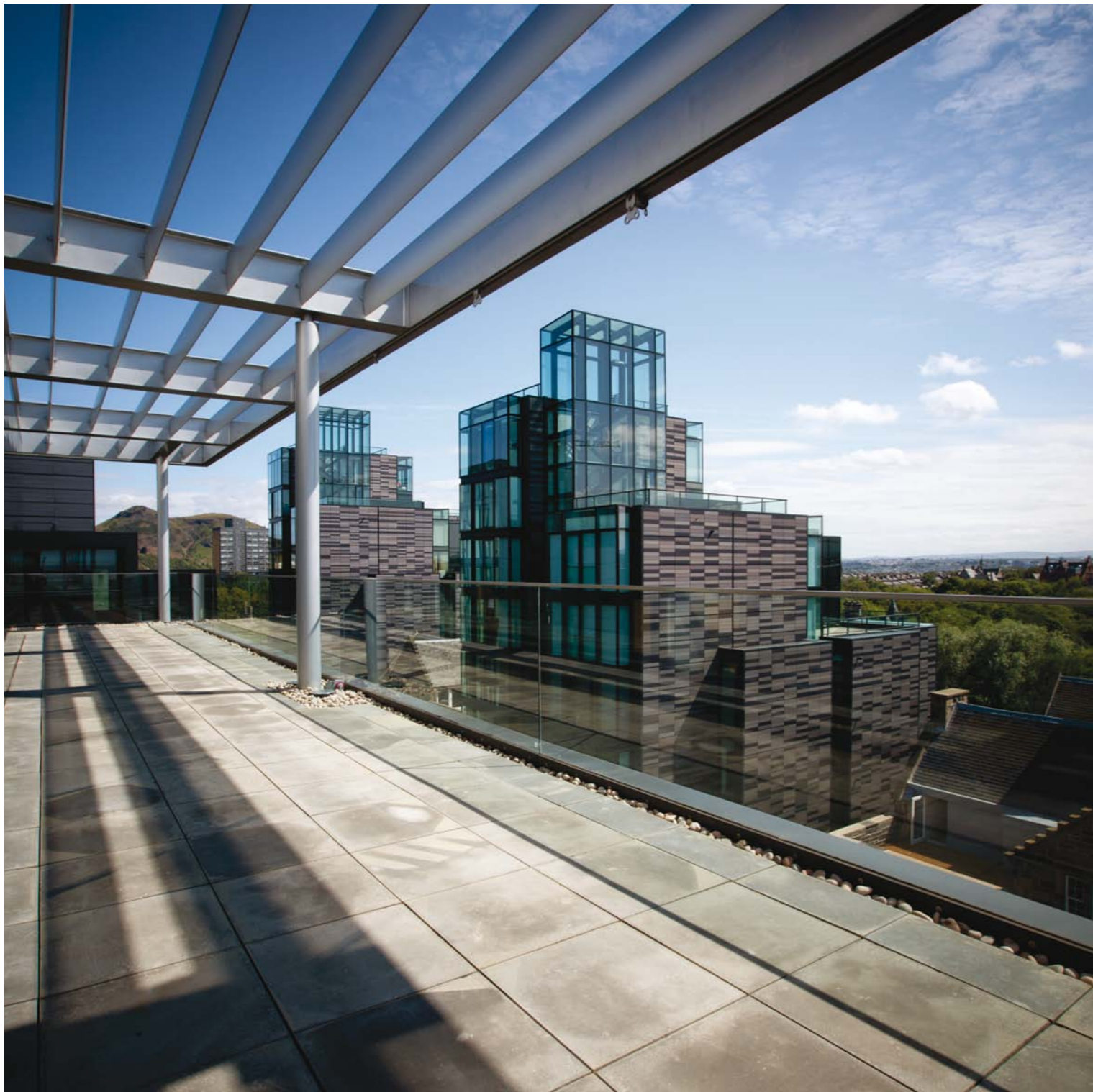




MEADOWS VIEW

LIVE THE HIGH LIFE

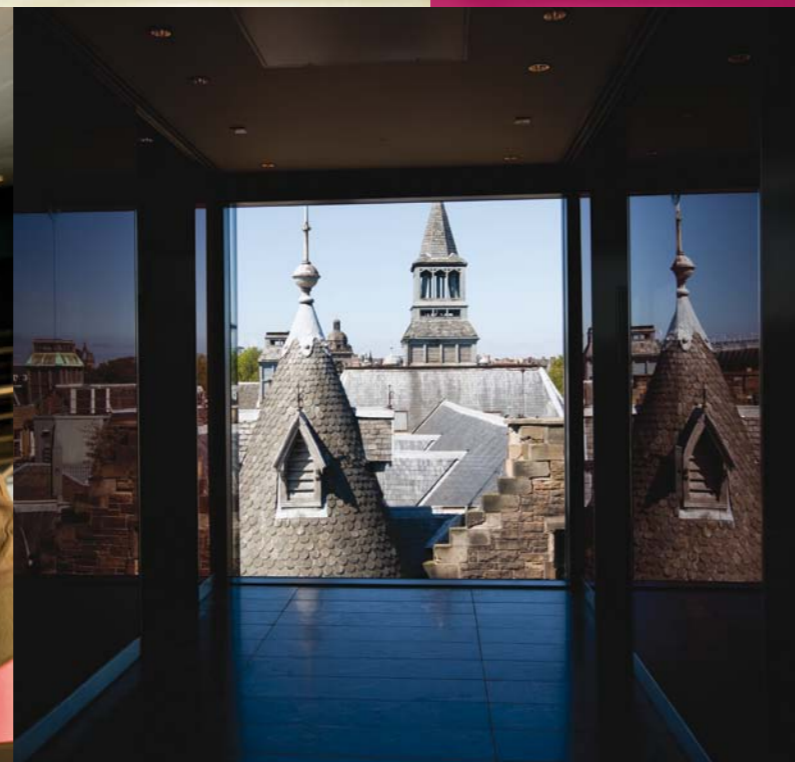




IN THE HEART OF A HISTORIC CITY, AN EXCITING NEW QUARTER HAS EMERGED. QUARTERMILE IS A COSMOPOLITAN MIX OF LUXURY APARTMENTS, VIBRANT CAFÉS AND THRIVING BUSINESSES IN A PRIME CITY CENTRE LOCATION. WHERE VICTORIAN BUILDINGS AND CUTTING EDGE DESIGN BLEND SEAMLESSLY TOGETHER. AND THE ATTRACTIONS OF MODERN CITY LIFE ARE COMPLEMENTED BY WIDE OPEN SPACES AND BREATHTAKING VIEWS OF THE CAPITAL'S GREATEST LANDMARKS. MASTER-PLANNED BY FOSTER + PARTNERS FOR A UNIQUE WORLD HERITAGE SITE, THE CONTEMPORARY APARTMENTS OF **MEADOWS VIEW** OFFER THE MOST DESIRABLE NEW ADDRESS IN EDINBURGH TODAY.

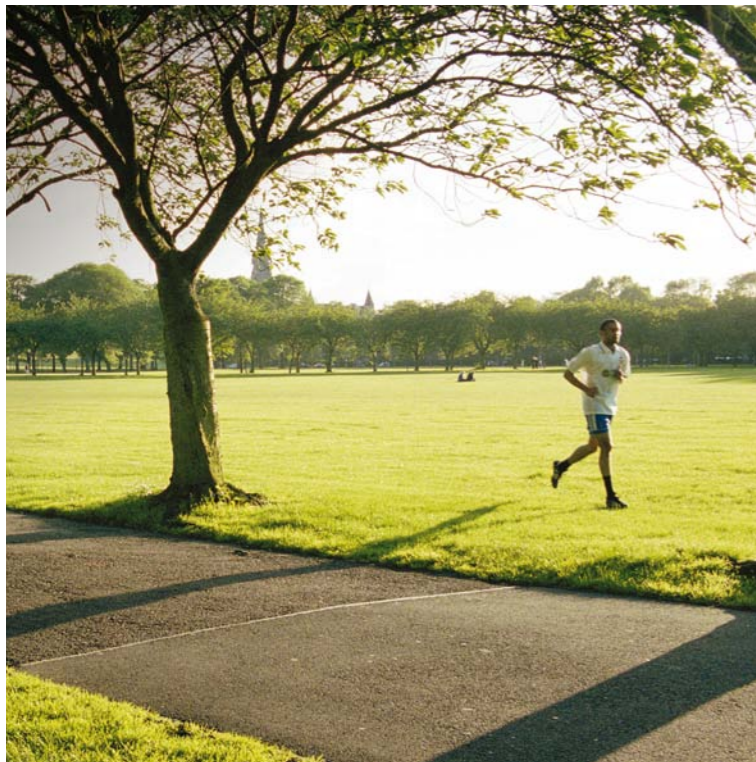


GREEN
OPEN
SPACES

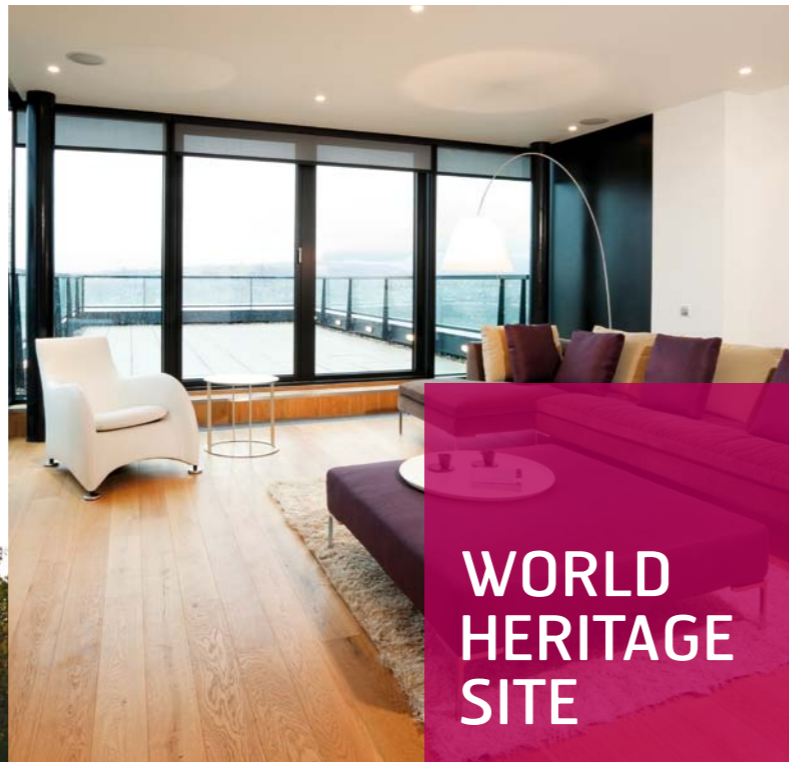
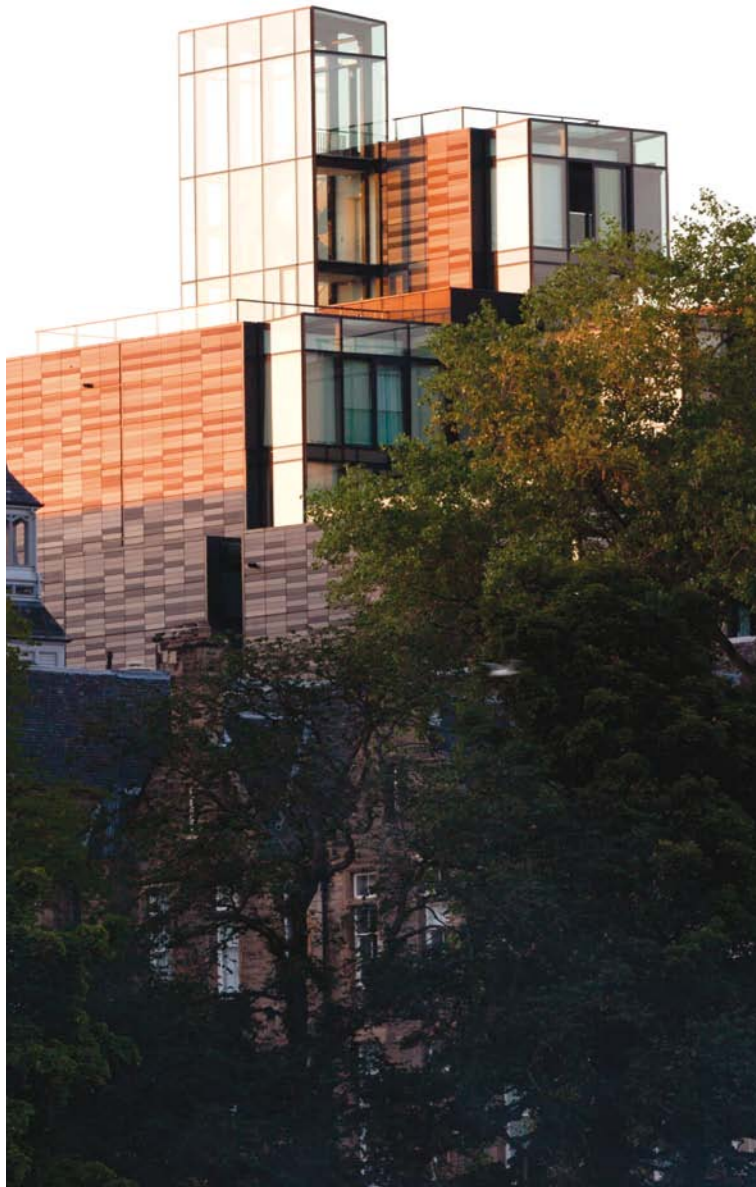


VIBRANT
CITY
LIVING





To live at Quatermile is to have the best of Edinburgh on your doorstep. There are shops and cafés, an aparthotel and 24 hour gym within Quatermile itself. Edinburgh University and museums are your closest neighbours. Edinburgh Castle and the Old Town are a stone's throw away. Theatre district and Princes Street are both within walking distance. The lush green Meadows provides a back garden most can only dream of. At the heart of it all? You, and the luxury of home.

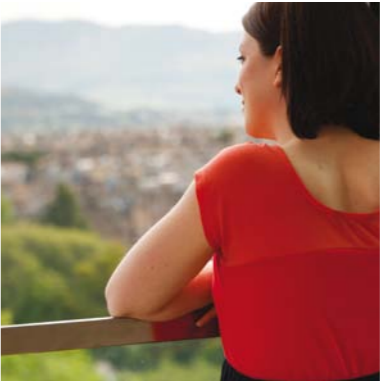


WORLD
HERITAGE
SITE



MODERN
URBAN
DESIGN





Meadows View is the latest phase to be released at Quartermile. Its striking glass exterior rises majestically above the treetops, providing a tantalising hint of the stunning contemporary homes within.

Each of the 31 apartments are beautifully appointed to the highest specifications, including oak flooring, bespoke Foster + Partners designed kitchens and bathrooms, integrated kitchen appliances and stylish worktops, custom integrated wardrobes, and feature lighting throughout. Full height windows infuse the rooms with natural light. Underground parking (available by separate negotiation) is accessed directly from the building. While all residents enjoy the luxury of our exclusive 24 hour concierge service.

Incorporating 1, 2, and 4 bedroom apartments and topped by a spectacular 4 bedroom penthouse with roof terrace, Meadows View is the ultimate in stylish, comfortable, modern living.

- Office Space
 - New Build Apartments
 - Conversion Apartments
 - Retail, Leisure and Hotels
 - Affordable
 - Meadows View
- A. Shops & cafés
 - B. Gym
 - C. Hotel
 - D. Lister Square
 - E. Quatermile Marketing Centre



**LIVE THE
HIGH LIFE
ARRANGE
A VIEWING
TODAY**



+44 (0)845 000 2525
www.qmile.com

Quatermile Marketing Centre
1 Lauriston Place EH3 9AU – open 7 days

The development layout plan has been produced prior to construction, therefore there may be modifications to the site layout. Prior to making a purchasing decision, please consult with the sales agent for the latest development layout plan.

MEADOWS VIEW
LEVEL 00



Plot 374

Lounge/Kitchen	4.685m x 3.660m	15ft 4" x 12ft 0"
Bedroom	3.327m x 2.900m	10ft 11" x 9ft 6"
Shower Room	2.690m x 1.500m	8ft 10" x 4ft 11"

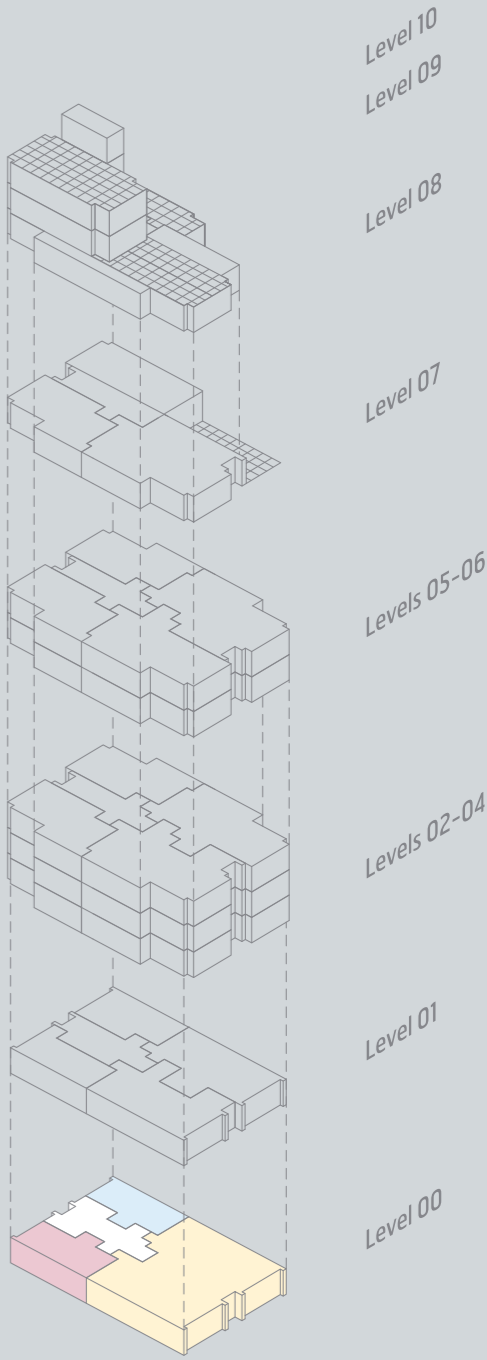
Plot 375

Lounge/Dining	13.700m x 3.985m	44ft 11" x 13ft 1"
Kitchen	5.670m x 3.400m	18ft 7" x 11ft 2"
Bedroom 1	5.600m x 4.150m	18ft 4" x 13ft 7"
En-suite (1)	2.440m x 1.500m	8ft 0" x 4ft 11"
Bedroom 2	5.600m x 4.165m	18ft 4" x 13ft 8"
En-suite (2)	2.440m x 2.000m	8ft 0" x 6ft 7"
Bedroom 3	4.320m x 2.625m	14ft 2" x 8ft 7"
Bedroom 4	4.300m x 2.625m	14ft 1" x 8ft 7"
Bathroom	2.565m x 1.700m	8ft 5" x 5ft 7"

Plot 376

Lounge/Kitchen	4.685m x 3.660m	15ft 4" x 12ft 0"
Bedroom	3.327m x 2.900m	10ft 11" x 9ft 6"
Shower Room	2.690m x 1.500m	8ft 10" x 4ft 11"

All plans in this brochure are not drawn to scale and are for illustrative purposes only. Consequently they do not form part of any contract. All kitchen, bathroom and en-suite layouts are provisional and may be subject to alteration.



MEADOWS VIEW
LEVEL 01



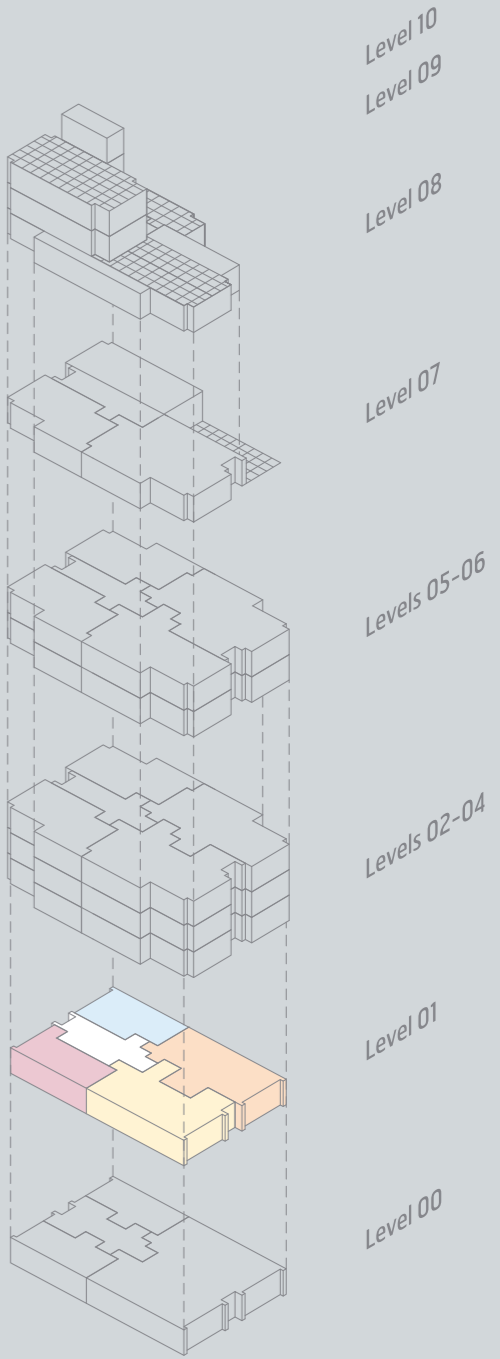
Plot 377		
Lounge/Kitchen	5.200m x 4.795m	17ft 1" x 15ft 9"
Bedroom	4.638m x 2.880m	15ft 3" x 9ft 5"
Shower Room	2.440m x 1.500m	8ft 0" x 4ft 11"

Plot 378		
Lounge/Kitchen	6.585m x 5.200m	21ft 7" x 17ft 1"
Bedroom 1	4.300m x 2.635m	14ft 1" x 8ft 8"
Bedroom 2	4.300m x 2.825m	14ft 1" x 9ft 3"
Bathroom	2.700m x 2.515m	8ft 10" x 8ft 3"

Plot 379		
Lounge/Kitchen	8.100m x 5.185m	26ft 7" x 17ft 0"
Bedroom 1	4.300m x 2.625m	14ft 1" x 8ft 7"
Bedroom 2	4.300m x 2.800m	14ft 1" x 9ft 2"
En-suite (2)	2.440m x 1.500m	8ft 0" x 4ft 11"
Bathroom	2.710m x 2.000m	8ft 11" x 6ft 7"

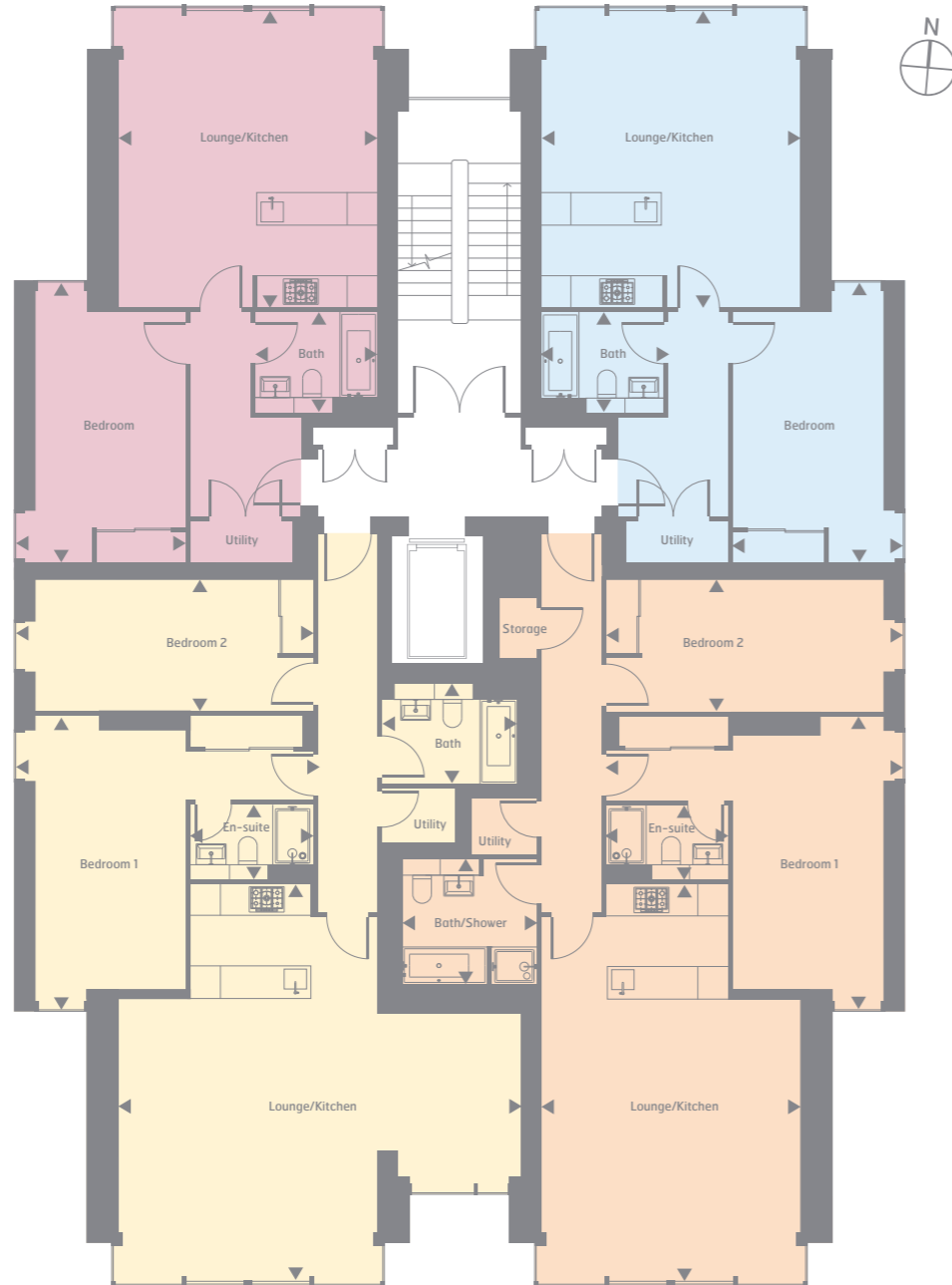
Plot 380		
Lounge/Kitchen	5.200m x 4.535m	17ft 1" x 14ft 10"
Bedroom	3.475m x 2.900m	11ft 5" x 9ft 6"
Bathroom	2.700m x 1.500m	8ft 10" x 4ft 11"

All plans in this brochure are not drawn to scale and are for illustrative purposes only. Consequently they do not form part of any contract. All kitchen, bathroom and en-suite layouts are provisional and may be subject to alteration.



MEADOWS VIEW

LEVEL 02
LEVEL 03
LEVEL 04



Plots 381 • 385 • 389

Lounge/Kitchen	5.855m x 5.200m	19ft 2" x 17ft 1"
Bedroom	5.465m x 3.220m	17ft 11" x 10ft 7"
Bathroom	2.440m x 2.000m	8ft 0" x 6ft 7"

Plots 382 • 386 • 390

Lounge/Kitchen	7.855m x 5.200m	25ft 9" x 17ft 1"
Bedroom 1	5.770m x 5.715m	18ft 11" x 18ft 9"
Bedroom 2	5.770m x 2.650m	18ft 11" x 8ft 8"
En-suite	2.440m x 1.500m	8ft 0" x 4ft 11"
Bathroom	2.515m x 2.700m	8ft 3" x 8ft 10"

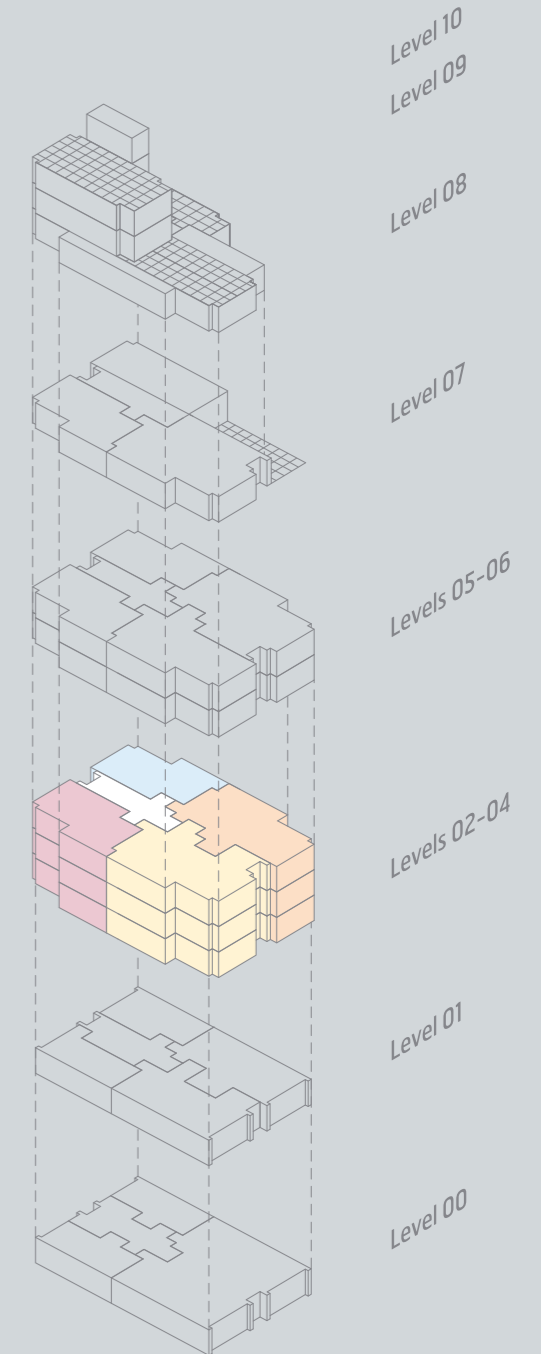
Plots 383 • 387 • 391

Lounge/Kitchen	8.100m x 7.855m	26ft 7" x 25ft 9"
Bedroom 1	5.770m x 5.740m	18ft 11" x 18ft 10"
Bedroom 2	5.770m x 2.625m	18ft 11" x 8ft 7"
En-suite	2.440m x 1.500m	8ft 0" x 4ft 11"
Bathroom	2.710m x 2.000m	8ft 11" x 6ft 7"

Plots 384 • 388 • 392

Lounge/Kitchen	5.855m x 5.200m	19ft 2" x 17ft 1"
Bedroom	5.465m x 3.220m	17ft 11" x 10ft 7"
Bathroom	2.440m x 2.000m	8ft 0" x 6ft 7"

All plans in this brochure are not drawn to scale and are for illustrative purposes only. Consequently they do not form part of any contract. All kitchen, bathroom and en-suite layouts are provisional and may be subject to alteration.



MEADOWS VIEW

LEVEL 05
LEVEL 06



Plots 393 • 397

Lounge/Kitchen	5.855m x 5.200m	19ft 2" x 17ft 1"
Bedroom	5.465m x 3.220m	17ft 11" x 10ft 7"
Bathroom	2.440m x 2.000m	8ft 0" x 6ft 7"

Plots 394 • 398

Lounge/Kitchen	8.100m x 7.855m	26ft 7" x 25ft 9"
Bedroom 1	5.575m x 5.440m	18ft 3" x 17ft 10"
Bedroom 2	5.770m x 2.650m	18ft 11" x 8ft 8"
En-suite	2.440m x 2.000m	8ft 0" x 6ft 7"
Bathroom	2.760m x 2.700m	9ft 1" x 8ft 10"

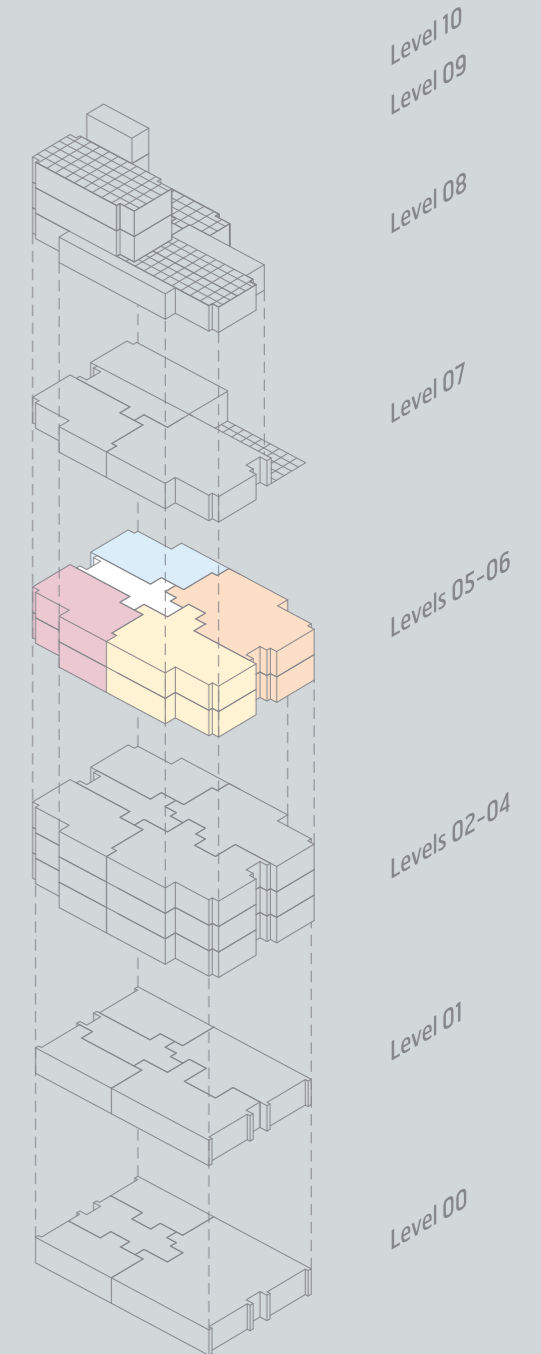
Plots 395 • 399

Lounge/Kitchen	7.795m x 5.200m	25ft 7" x 17ft 1"
Bedroom 1	5.575m x 5.440m	18ft 3" x 17ft 10"
Bedroom 2	5.770m x 2.625m	18ft 11" x 8ft 7"
En-suite	2.440m x 1.500m	8ft 0" x 4ft 11"
Bathroom	2.860m x 2.000m	9ft 5" x 6ft 7"

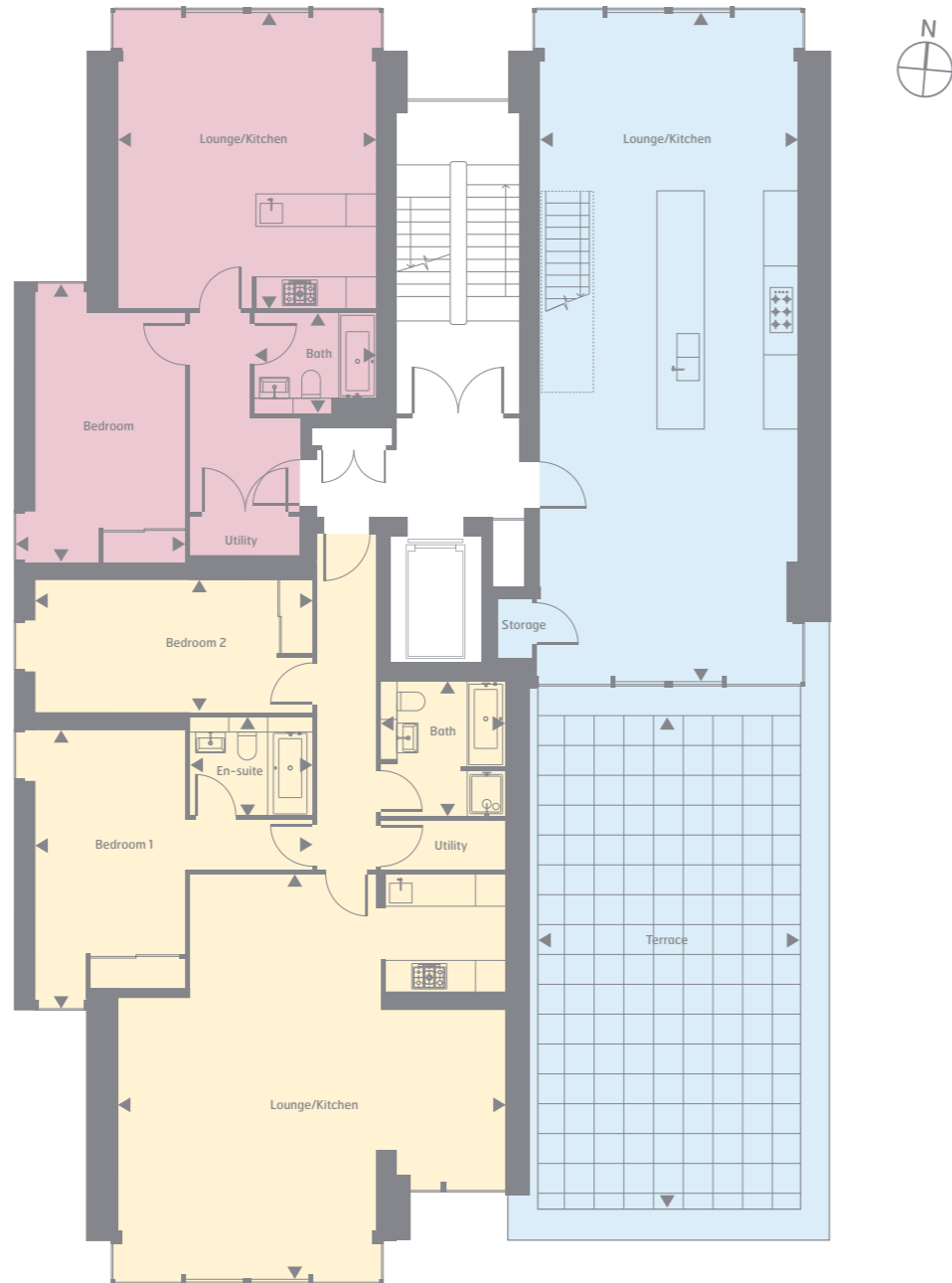
Plots 396 • 400

Lounge/Kitchen	5.855m x 5.200m	19ft 2" x 17ft 1"
Bedroom	5.465m x 3.220m	17ft 11" x 10ft 7"
Bathroom	2.440m x 2.000m	8ft 0" x 6ft 7"

All plans in this brochure are not drawn to scale and are for illustrative purposes only. Consequently they do not form part of any contract. All kitchen, bathroom and en-suite layouts are provisional and may be subject to alteration.



MEADOWS VIEW
LEVEL 07



Plot 401 (first floor)

Lounge/Kitchen	13.285m x 5.200m	43ft 7" x 17ft 1"
Terrace	9.780m x 5.140m	32ft 1" x 16ft 10"

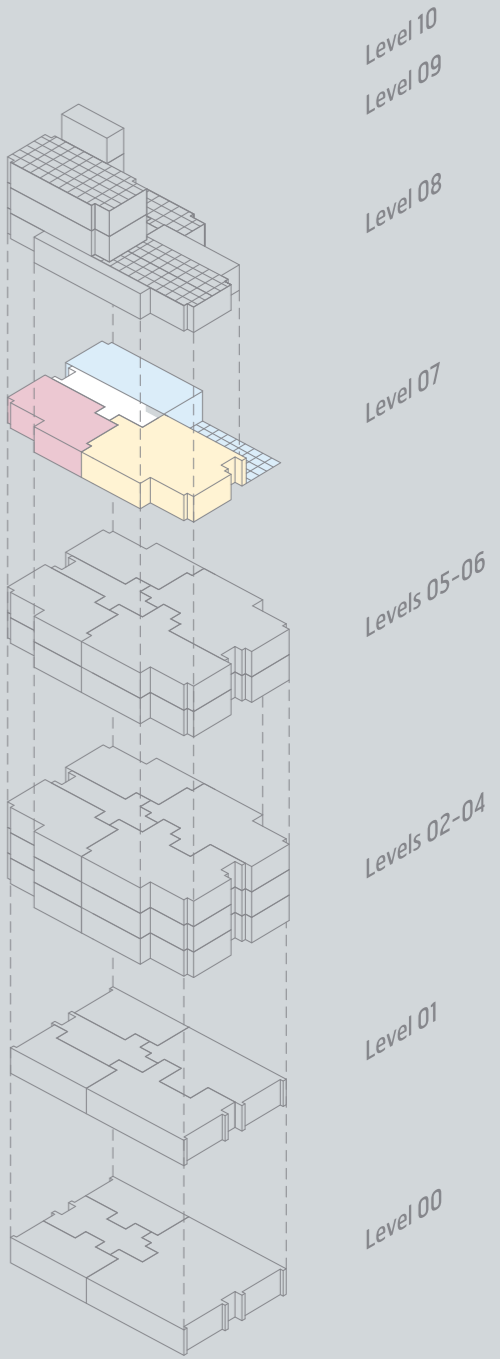
Plot 402

Lounge/Kitchen	8.055m x 7.825m	26ft 5" x 25ft 8"
Bedroom 1	5.575m x 5.440m	18ft 3" x 17ft 10"
Bedroom 2	5.770m x 2.625m	18ft 11" x 8ft 7"
En-suite	2.440m x 2.000m	8ft 0" x 6ft 7"
Bathroom	2.700m x 2.510m	8ft 10" x 8ft 3"

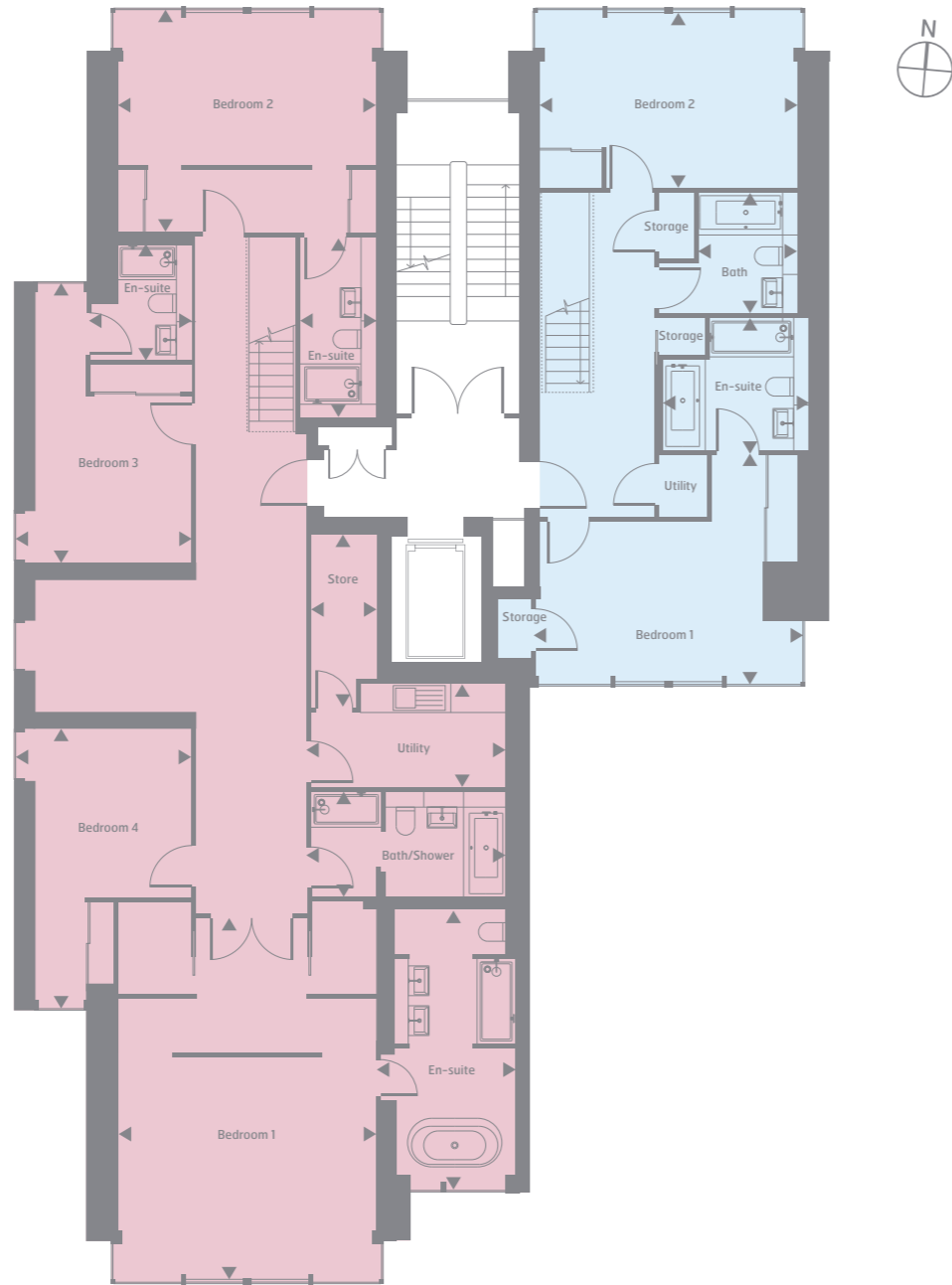
Plot 403

Lounge/Kitchen	5.855m x 5.200m	19. ft 2" x 17ft 1"
Bedroom	5.465m x 3.220m	17ft 11" x 10ft 7"
Bathroom	2.440m x 2.000m	8ft 0" x 6ft 7"

All plans in this brochure are not drawn to scale and are for illustrative purposes only. Consequently they do not form part of any contract. All kitchen, bathroom and en-suite layouts are provisional and may be subject to alteration.



MEADOWS VIEW
LEVEL 08



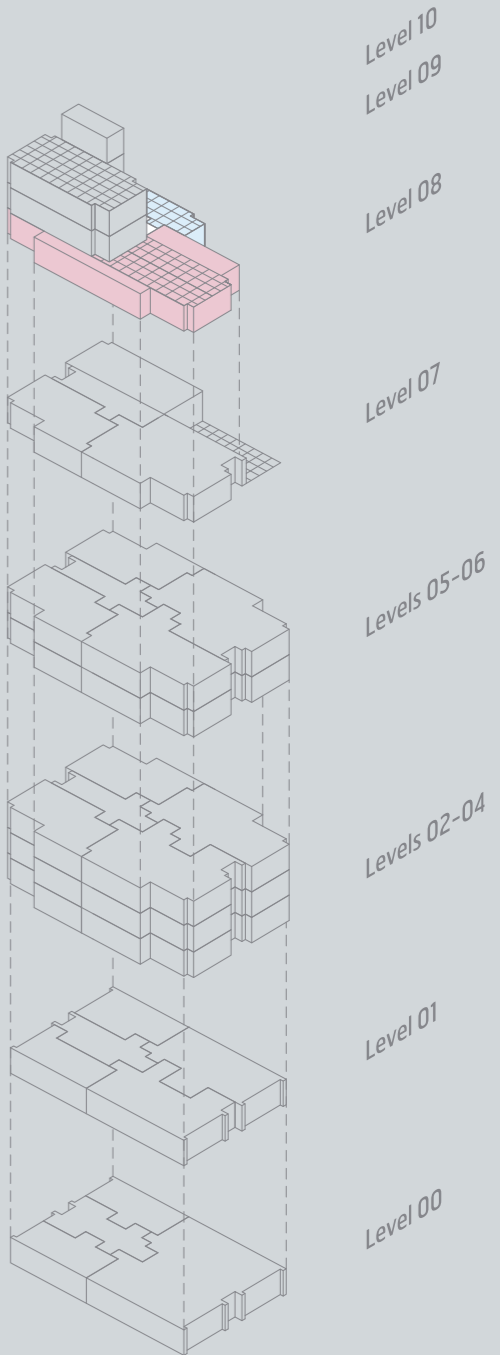
Plot 404 (first floor)

Bedroom 1	7.155m x 5.200m	23ft 6" x 17ft 1"
En-suite (1)	5.505m x 2.525m	18ft 1" x 8ft 3"
Bedroom 2	5.225m x 4.310m	17ft 2" x 14ft 2"
En-suite (2)	3.365m x 1.500m	11ft 0" x 4ft 11"
Bedroom 3	5.465m x 3.295m	17ft 11" x 10ft 10"
En-suite (3)	2.440m x 2.015m	8ft 10" x 6ft 7"
Bedroom 4	5.440m x 3.345m	17ft 10" x 10ft 12"
Bathroom	3.990m x 2.115m	13ft 1" x 6ft 11"

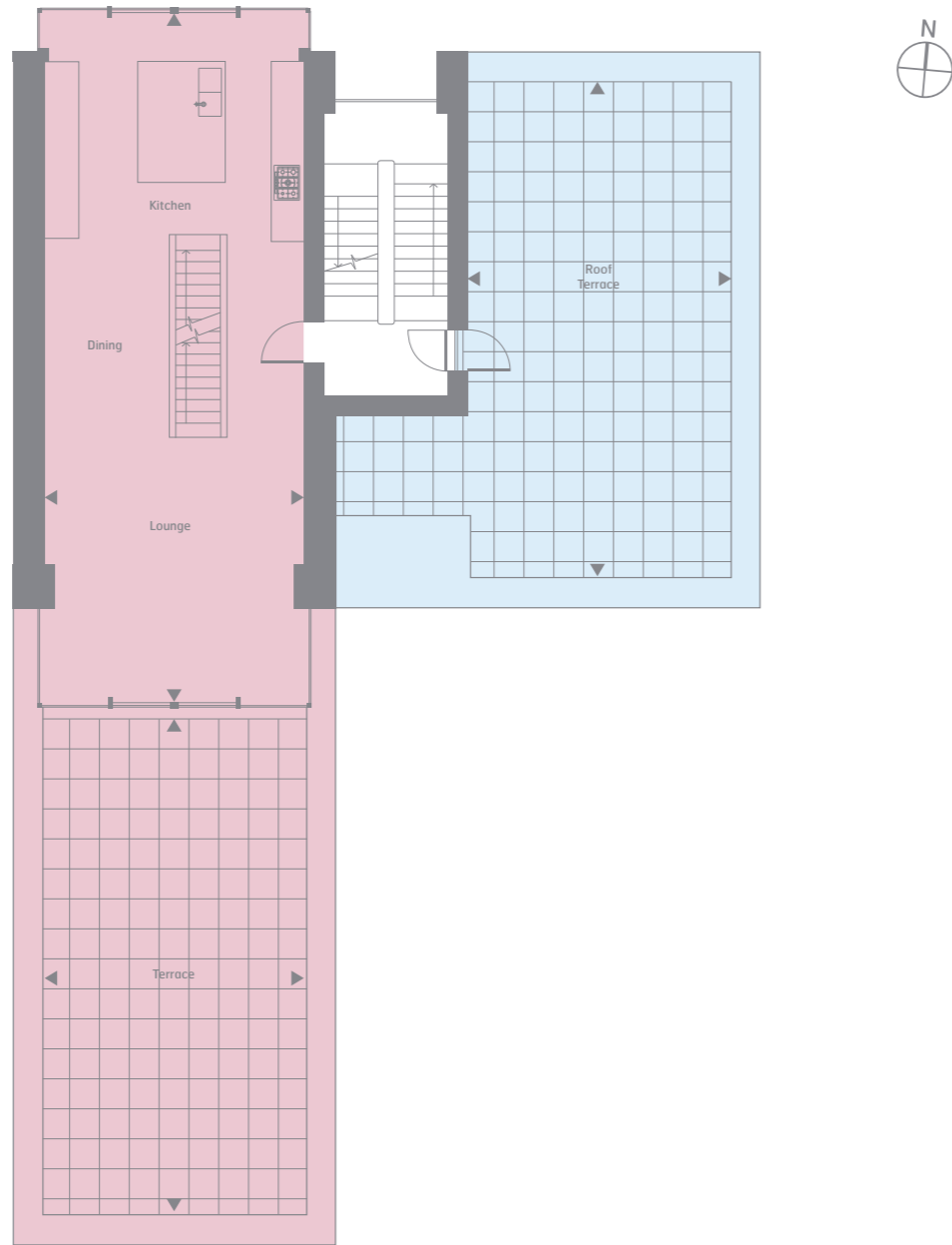
Plot 401 (second floor)

Bedroom 1	5.200m x 4.490m	17ft 1" x 14ft 9"
En-suite (1)	2.950m x 2.650m	9ft 8" x 8ft 8"
Bedroom 2	5.200m x 3.485m	17ft 1" x 11ft 5"
Bathroom	2.785m x 2.440m	9ft 2" x 8ft 0"

All plans in this brochure are not drawn to scale and are for illustrative purposes only. Consequently they do not form part of any contract. All kitchen, bathroom and en-suite layouts are provisional and may be subject to alteration.

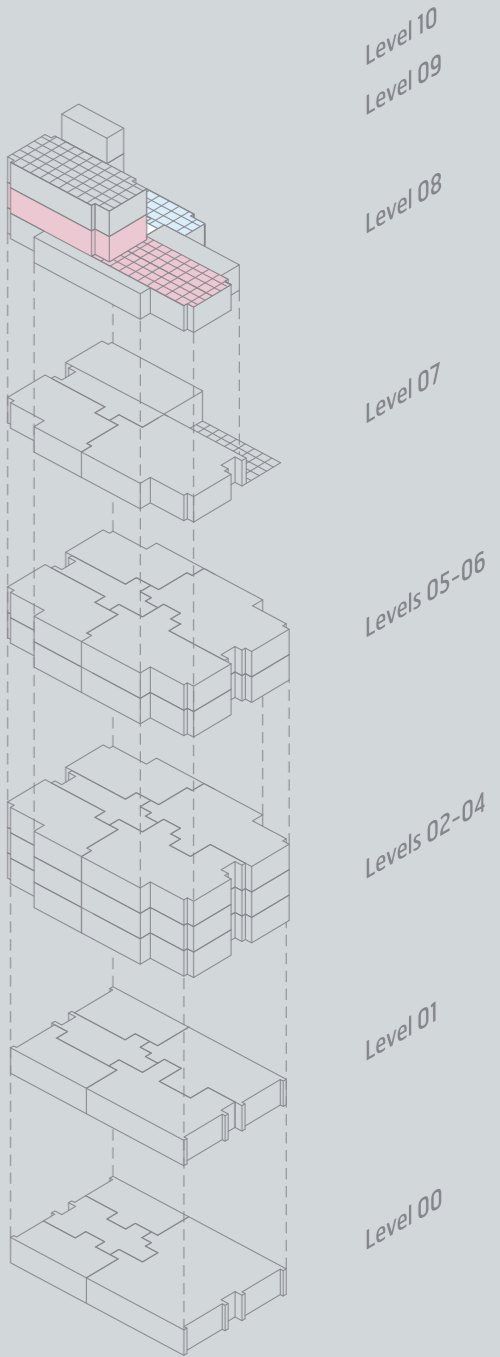


MEADOWS VIEW
LEVEL 09

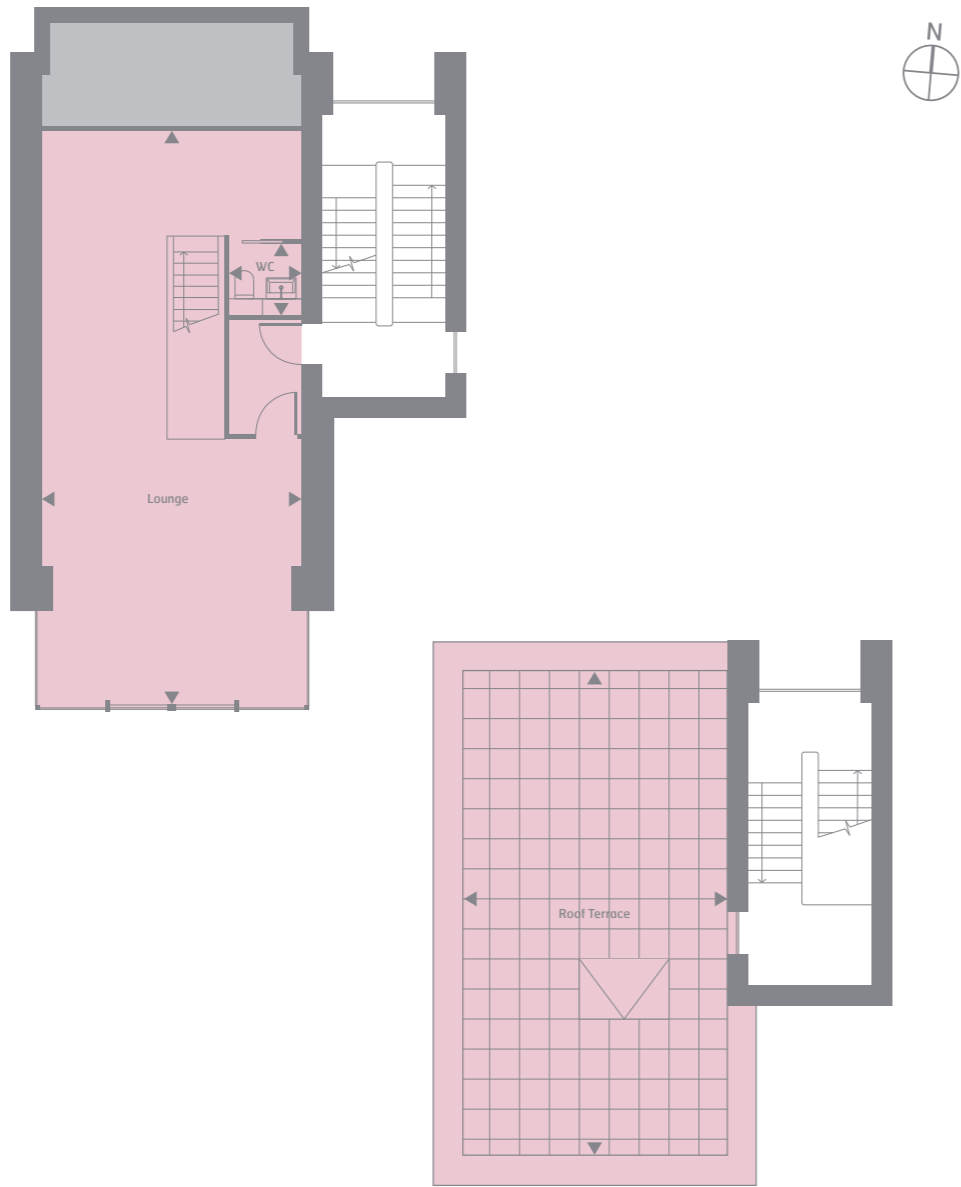


Plot 404 (second floor)		
Lounge/Kitchen	13.285m x 5.200m	43ft 7" x 17ft 1"
Terrace	10.140m x 5.080m	33ft 3" x 16ft 8"
Plot 401 (roof terrace)		
Roof Terrace	9.780m x 5.140m	32ft 1" x 16ft 10"

All plans in this brochure are not drawn to scale and are for illustrative purposes only. Consequently they do not form part of any contract. All kitchen, bathroom and en-suite layouts are provisional and may be subject to alteration.



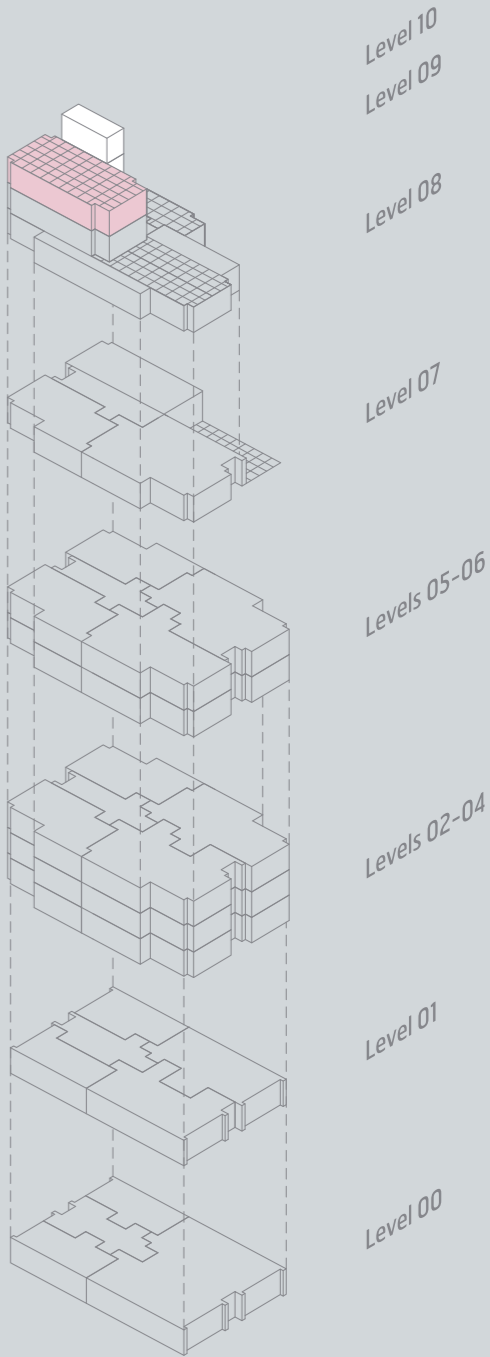
MEADOWS VIEW
LEVEL 10



Plot 404 (third floor & roof terrace)

Lounge	11.100m x 5.200m	36ft 5" x 17ft 1"
WC	1.540m x 1.420m	5ft 1" x 4ft 8"
Roof Terrace	9.780m x 5.140m	32ft 1" x 16ft 10"

All plans in this brochure are not drawn to scale and are for illustrative purposes only. Consequently they do not form part of any contract. All kitchen, bathroom and en-suite layouts are provisional and may be subject to alteration.



MEADOWS VIEW SPECIFICATION

PARKING

- Allocated by separate negotiation

COMMUNAL AREAS

- Video entry system to all apartments
- All apartments are serviced by a lift
- Porcelain tiles to entrance areas
- Carpets to lift lobbies and corridors

KITCHENS

- Bespoke kitchen designed by Foster + Partners
- Integrated Siemens dishwasher
- Integrated Siemens fridge freezer
- Integrated Siemens microwave*
- Siemens stainless steel oven
- Siemens induction hob
- Stainless steel sink with chrome monoblock mixer tap
- Integrated compartmental recycling bins
- Utility room has a freestanding washer drier

BATHROOMS AND EN-SUITES

- Bespoke bathrooms designed by Foster + Partners
- White wall hung WCs and basins from the Villeroy and Boch range
- White Villeroy and Boch bath with glass bath screen and shower above*
- Hans Grohe mixer taps to bath and basin
- Low profile shower tray with glass enclosure*
- Porcelain wall and floor tiles
- Tiled skirtings matching floor tiles
- Shaver socket
- Vanity units above basins with mirrors

LIGHTING

- LED recessed downlighters to kitchens, bathrooms, living rooms, bedrooms and hallways
- Feature lighting to bathroom and kitchen cabinets

HEATING

- Communal gas fired central heating
- Wall mounted radiators
- Polished chrome electric heated towel rail to all bathrooms
- Underfloor electric trace heating to all bathrooms

ELECTRICAL

- TV, radio and telephone points to all principal rooms
- Structured cabling platform enabling allocation of telephone points throughout the home; network computers, printers and internet access and satellite, cable or terrestrial TV throughout the main living areas
- Smoke detectors to hall and heat detector to kitchen/living area

FLOORING

- Oak flooring to living room, kitchen and hallways
- Porcelain floor tiles to all bathrooms
- Linoleum to utility rooms

GENERAL

- Internal doors are flush solid core white
- Ironmongery is satin stainless steel
- Walls are painted in a white emulsion
- Skirtings and architraves are also white
- Floor to ceiling windows in living areas which are double glazed with tilt and slide double glazed doors
- Fitted wardrobes with shelving

* Depending on apartment layout.

GRAPHICS AND IMAGES

The computer generated graphics have been prepared for illustrative purposes and are indicative only. They do not form part of any contract, or constitute a representation or warranty. External appearance may be subject to variation upon completion of project.



QUARTERMILE MARKETING SUITE

1 Lauriston Place
Edinburgh EH3 9AU
Tel: +44 (0)845 000 2525
www.qmile.com



+44 (0)845 000 2525
qmile.com